

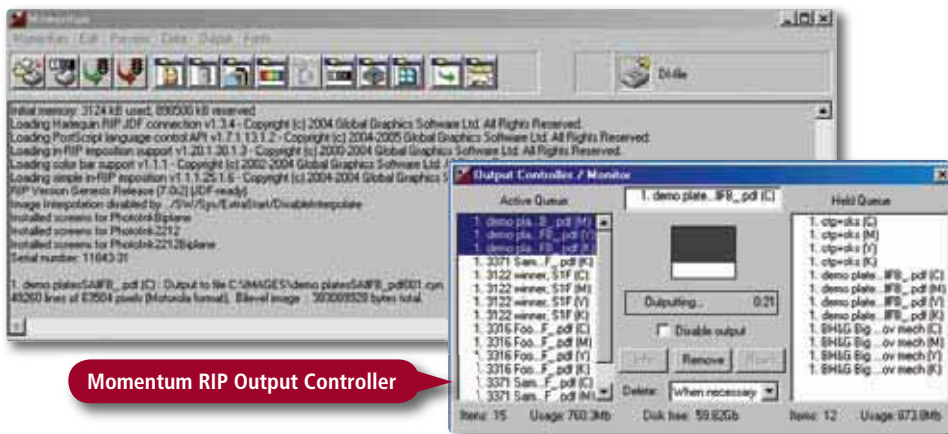
# Presstek Momentum RIP

The Fast, Reliable Choice

The feature-rich Momentum RIP version 8 delivers the reliability, flexibility, and excellent color quality required by today's print shops. Momentum is designed to drive Presstek CTP and DI systems as well as ABDick branded CTP systems. Momentum comes complete with input and output mechanisms that allow maximum flexibility for controlling jobs. Momentum is based on the fast, reliable, high-performance Harlequin RIP that supports Multi-Threading technology. This enables the RIP to take advantage of dual and quad core processors increasing speed and performance. The latest Momentum release offers new features and options including Raster PDF a softproof, PDF Workflow option, Windows Vista support and Multi-Thread support.



## MOMENTUM RIP



Momentum RIP Output Controller

provides a PDF of the raster (RIPped) file. The PDF can be rendered at either 300 or 600 dpi, allowing the PDF to be emailed to customers for viewing and approval. The customer will now be able to view the job as it was RIPped, thus providing a closer verification of the final output.

### CIP3 option

The CIP3 output plug-in enables the Momentum RIP to produce Print Production Format (PPF) files containing information about print jobs, including ink key data. The PPF file is read by a CIP3 reader (included with press control systems), which provides instructions for automatically setting ink fountains on press.

### Screening

Momentum RIP offers screening technology that is designed to resolve quality issues faced by the prepress and printing industry. The standard AM screening is based on Harlequin Precision Screening (HPS) and provides high resolution output up to 300 lines per inch.

The optional FM screening is based on Harlequin Dispersed Screening (HDS). HDS screening creates reproductions with increased sharpness over AM Screening and offers relief from cross screens and object moiré. In addition it addresses many of the deficiencies other FM screening techniques suffer from, and provides a more robust, high quality screening solution for a variety of printing situations.

## Momentum RIP Highlights

### Native PDF, PS, and XPS Processing

Momentum RIP not only can process PostScript and PDF files natively but also the newest print format XPS, the XML Paper Specification. Processing file formats natively means there is no intermediary conversion to another file format, so that files are rendered faster and accurately. Momentum RIP processes the following file formats natively:

- PDF 1.7 PDF/X-1a, PDF/X-3 and PDF/X-4
- XPS v.1.0 (XML Paper Specification)
- PostScript Language Level 3, TIFF 6, ESP, DCS, JPEG, GIF

### In-RIP Trapping Option

MTrapPro is an in-RIP trapping application that handles trapping automatically as jobs are processed through your workflow. MTrapPro uses an object-based, raster-aware engine that delivers outstanding performance. This trapping engine uses Device-Oriented Display List generated by the Momentum RIP to determine trap positions. This allows the system to trap everything the RIP renders with pixel accuracy. MTrapPro has features top printers and publishers demand including sliding traps, feathered traps, chokes super blacks, and small object protection.

### Color Management/ Proofing Option

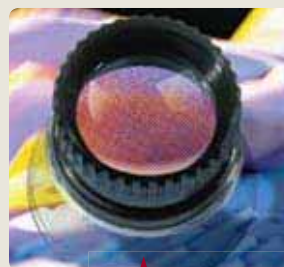
Adding an MProof plugin to the Momentum RIP helps ensure data integrity by using the same RIP to drive your output device and proofing device. MProof provides excellent color process control, giving accurate, consistent and predictable color reproduction for a wide range of workflows. MProof includes many industry standard ICC Profiles giving you "Out of the Box" proofing standards. Importing custom made ICC profiles generated from Third Party profiling software is also supported.

### Raster PDF Plug-in

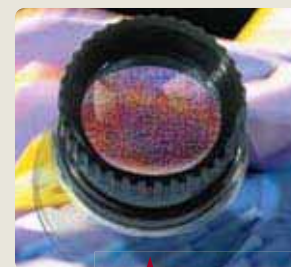
Raster PDF is a soft proofing plug-in that



175 line screen



300 line screen



FM screen

## Automatic ThumbPrint Generation

Thumbprints are low resolution preview files of the ripped job, used in conjunction with Presstek DI presses and Dimension 200 and 400 series . Thumbprints enable the operator to easily identify the job before imaging plates. This reduces the potential for wasted plates due to selecting the wrong job. Rather than viewing a list of files names, you see a clear preview of what the job looks like by simply selecting the job.

## Font Emulation

Momentum RIP has one of the most advanced font emulation capabilities on the market. When there is a missing font, this feature can be switched on to make a typographically

acceptable match with no text overflow and appropriate character spacing, including weight and width.

## QMDI Ink Key Generation

offers ink key files contain information about the ripped job, including ink data. These files are used at the DI press console where the ink keys are automatically set based on the ripped data. Previously the ink key generation was required to be done at the DI console. Depending on the system level this would have taken anywhere from 2 minutes to 5 minutes. The ink key files are now generated instantly at the same time as the ripped job saving time and manual intervention.



## Service and Support

Presstek is committed to providing you the highest levels of service and support for your Presstek products. Presstek's unparalleled expertise in laser imaging technology combined with our extensive service experience brings you the leading support in the industry. Expert installation, training and maintenance will support your investment, so it will pay dividends quickly and reliably for years to come.

## Upgrade to Presstek Momentum Pro

The Momentum RIP can be upgraded to a PDF workflow. Momentum Pro integrates Momentum Workflow, an entry level PDF workflow solution, with the Momentum RIP. Momentum Workflow increases productivity, manages your workflow, and helps reduce costs. An intuitive interface allows multiple operators to manage their work from any Windows or Macintosh workstation on the network.

Drag and drop functionality, in addition to traditional job submission methods, make Momentum Workflow very simple to use. It is modular, expandable and includes PDF creation, preflight controls, and the ability to incorporate Certified PDF™.

### Momentum Pro Features and Benefits:

- Easy-to-use—Desktop control of major RIP functionality
- Integrated soft proofing—Preview jobs from any desktop
- Job tracking—Track job progress throughout the system
- Modular—Start with the features you need
- Expandable—Add features and capabilities as needs dictate
- Flexible—Protect existing RIP investment



Printed with Presstek chemistry-free digital offset technology on Chorus Art 100lb. Silk Cover. Chorus Art stock contains 50 percent recycled fiber, including 25 percent post-consumer waste, and is Forest Stewardship Council certified.

## Momentum RIP Specifications

<b>RIP Technology</b>	<b>Harlequin</b>
<b>In-RIP Trapping</b>	<b>MTrapPro (option), Trap Zone support with PDF files</b>
<b>Input Formats</b>	<b>Postscript, PDF, EPS, Tiff 6.0, 1-Bit Tiff</b>
<b>Output Formats</b>	<b>Presstek Dimension and Vector FL52 CTP Systems, Presstek DI presses, Presstek enabled DI presses, ABDick DPM CTP series, 1-Bit Tiff, 8-Bit Tiff, QMDI Ink Key Files, CIP3 (option), Raster PDF</b>
<b>Screening</b>	<b>AM Screening based on Harlequin Precision Screening FM Screening based on Harlequin Dispersed Screening (option)</b>
<b>Color Management</b>	<b>MProof with enhanced GUI support for N-Color and gray profiles, import ICC profiles, and includes industry standard ICC profiles</b>
<b>Printer Connectivity</b>	<b>Epson plug-in support, 1-Bit and 2-Bit EDS screening, device drivers available for Epson 4000, 4800, 7600, 7800, 9600, 9800, 4880, 7880, 9880. Other device drivers are also available.</b>

Product information and specifications are subject to change without notice.

For more information about  
Presstek Products:

## Presstek, Inc.

55 Executive Drive  
Hudson, NH 03051 USA  
Tel: 603-595-7000  
[www.presstek.com](http://www.presstek.com)



4/38 Dacre Street  
Mitchell ACT 2911  
Australia

Ph +61 2 6242 4427  
Fax +61 2 6242 5986  
[www.grafikalinks.com.au](http://www.grafikalinks.com.au)

