

Updater program for Kimosetter RIP
for the use
in Mac OS Classic environment

The updater package consists of 2 program files

[1] KMS340RIPClassciUpdater.sea.hqx



KMS340RIPClassicUpdater.s
ea.hqx

[2] Classic PPD Installer.sea.hqx



Classic PPD Installer.sea.hqx

and installation instructions (this document)

These updaters enables users of Kimosetter running with Mac OS X to print from both Classic applications and OS X applications.

Version requirements;

Mac OS X 10.3.x

Network requirements;

To run the RIP in OS X your Macintosh should be connected to the LAN. This is necessary to activate AppleTalk. If you are using your Macintosh as stand-alone, just get a hub and a LAN cable; connection to a hub without any other computers on the LAN can also activate AppleTalk.

Contents:

1. Fresh installation of Mac RIP on OS X classic environment	page 3
2. To connect the Kimosetter 340/340i to your computer	page 8
3. Computer name for OS X and Classic environment	page 9
4. To set up the printer	page12
5. Installation of KMS340 Classic Updater	page15
6. Installation of Classic PPD Installer	page17
7. Selecting Kimosetter for Classic environment and for OS X	page19
8. Printing	page24

1. Fresh installation of Mac RIP on OS X Classic environment

If you have already installed Mac RIP on your Macintosh (for example, you had once installed Mac RIP on Mac OS 9.x and have upgraded to OS X 10.3.x), you can skip this section and can go to "2. Installation of KMS340 Classic Updater".

Fresh installation of Mac RIP

You need the CD of Kimosetter 340 RIP 2.0.

STEP 1 Insert the CD in your Macintosh

When the CD is inserted, an icon of "Kimosetter 340 RIP 2.0 CD" will appear. Double click the icon.

STEP 2 Double click the Kimosetter 340 RIP Installer icon.

The icon of "Kimosetter 340 RIP Installer" is located in the folder of "Kimosetter 340 RIP 2.0 CD". Double click this icon, and Classic environment will open automatically.



STEP 3 Select language

Select "English" and click OK.



STEP 4 Enter ID and password

Enter user ID (6 digits) and password (20 digits) that is marked on the hardware key, and click OK. Ignore the hyphens in the password.

A dialog box titled "Registration" with two input fields: "User ID" and "Password". The "Password" field is longer than the "User ID" field. There are "Cancel" and "OK" buttons at the bottom right.


STEP 5 Confirm the product name and language

The Installation Option dialog appears. Confirm the right product name and language are chosen. Click OK.

A dialog box titled "Installation Options" showing "Product Name: Kimosetter 340 RIP 2.0" and "Language: English". There are "Cancel" and "OK" buttons at the bottom right.

STEP 6 Select install location

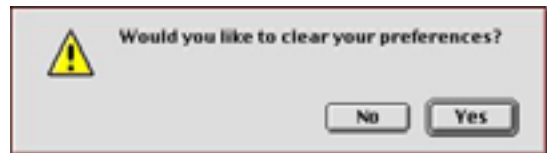
Select install location and click OK.

A dialog box titled "Kimosetter 340 RIP Installer". It contains a large text area with the instruction "Click 'Install' to install 'Kimosetter 340 RIP 2.0'." Below this, it shows "Disk space available: 1,260,100K" and "Approximate disk space needed: 79,536K". There is an "Install Location" section with a text box containing "The folder 'Kimosetter 340 RIP 2.0' will be created on the disk 'Macintosh HD'" and a dropdown menu showing "Macintosh HD". There are "Quit" and "Install" buttons on the right side.

CAUTION The install location should be the volume (disk or partition) where Classic system is installed.

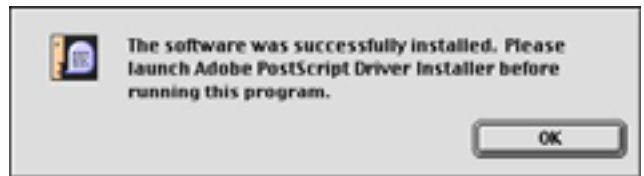
STEP 7 Clear preferences

A message asks you if you would like to clear the 'Kimosetter 340 RIP 2.0' preferences. Click Yes.



STEP 8 Confirm the message

A message will appear that prompt you to install 'Adobe PostScript Driver' Click OK.



STEP 9 Quit installation

Click QUIT to finish installation program of Kimosetter 340 RIP 2.0. DO NOT CLICK RESTART.



STEP 10 Install 'Adobe PostScript Driver'

Open the 'AdobePS Installers' folder in the CD and double-click the 'AdobePS Installer' icon.



MEMO The Adobe PostScript Driver in the CD is AdobePS 8.6. If this has already been installed, it is not necessary to re-install.

STEP 11 Read license agreement

When CONTINUE is clicked, the end user license agreement appears. If you accept the contents, click Accept.



STEP 12 Select install location

Select install location and click OK.



CAUTION The install location should be the volume (disk or partition) where Classic system is installed.

STEP 13 Confirm message

Read the message and click Continue.



STEP 14 Finish installation and restart

The message tells you that the installation has been completed. Click Restart. This will restart Classic environment only.



To install screen fonts

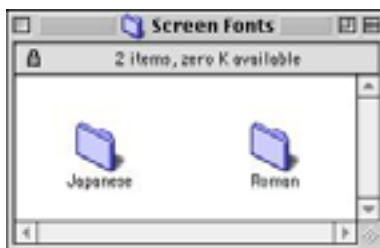
When the Kimosetter RIP 2.0 was installed, 117 typestyles of Adobe Type 1 and 19 typestyles of TrueType were automatically installed in the folder of the RIP program. In order to use these fonts in the application you have to install their screen fonts in the system folder using PS3 Fonts Installer.

CAUTION

- If your Macintosh System folder already has the TrueType screen fonts of Times, Helvetica, Courier and Symbol, the installer will replace them with their Adobe Type 1 version.
- In the default setting, AdobePS driver will substitute the following 3 fonts; Times for New York, Helvetica for Geneva, Courier for Monaco. If you do not want to substitute these fonts, uncheck 'Substitute Fonts' in the 'PostScript Options' tab in the Page Setup menu.

STEP 1 Open 'Roman' folder in the 'Screen Fonts' folder

Double-click 'PS3 Fonts Installer' icon.



STEP 2 Read license agreement

The Electronic End User License Agreement appears. If you accept the terms, click Accept.



STEP 3 Select fonts to install

Select 'Custom Install' and check the the fonts to install. Click OK.



CAUTION 'Easy Install' allows you to install all the fonts. Select 'Custom Install' to install specified fonts you will be using.

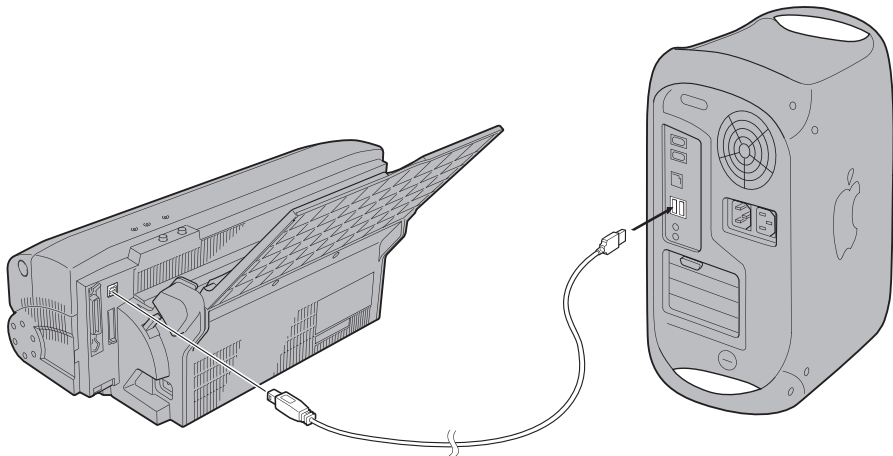
STEP 4 Restart

A message will appear telling that the installation was successful and prompts you to restart. Click Restart, and Classic environment will restart. If the Restart button will not work, select Quit from File menu.

2. To connect the Kimosetter 340/340i to your computer

Connect your Kimosetter 340/340i to a Macintosh as described in the User's Guide.

USB connection



OS X does not support SCSI connection.

Attach hardware key

Attach a USB hardware key supplied with the Kimosetter 340 RIP 2.0 to a USB port on the computer or on the keyboard. If your Mac has only one USB port, use a USB hub.

3. Computer name for OS X and Classic environment

To run the Kimosetter 340 RIP on a Mac with OS X the Computer Name on both OS X and Classic environment should be the same.

STEP 1 Open System Preferences

Select 'System Preferences' from Apple Menu of OS X.



STEP 2 Open 'Sharing'

In the System Preferences window, double-click the icon of Sharing.



STEP 3 Enter a name

Enter a name in the Computer Name field.



STEP 4 Quit the System Preferences

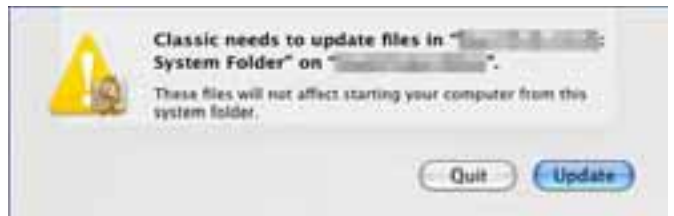
Close the window to quit the System Preferences.

STEP 5 Activate Classic environment

Start a Classic application, such as 'Simple Text', to activate Classic environment.



CAUTION A message may appear that prompts you to update necessary files. Click Update.



STEP 6 Open 'File Sharing'

Select Apple Menu > Control Panel > File Sharing



STEP 7 Give the same name

Enter the same name as you did in OS X System Preferences.



STEP 8 Quit File Sharing

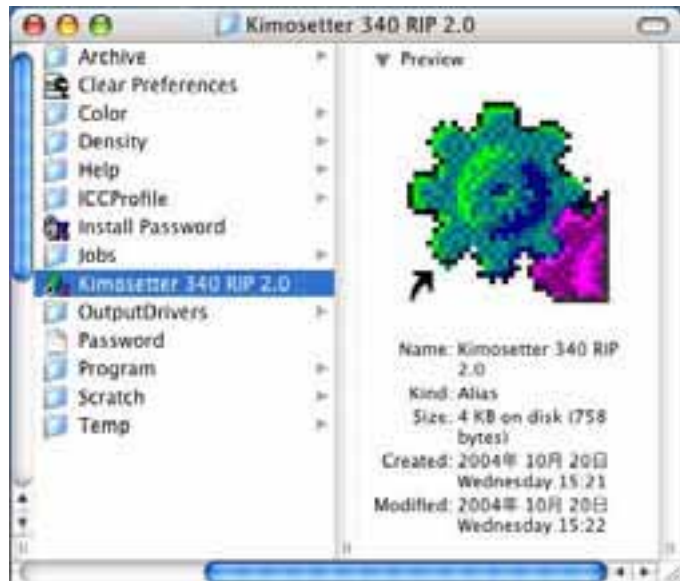
Close the File Sharing window to quit Control Panel.

4. To set up the printer

STEP 1 Start up RIP

Double-click the Kimosetter 340 RIP 2.0 icon.

CAUTION If the Kimosetter 340 RIP 2.0 icon does not appear on the desktop of OS X, locate the icon in the folder of Kimosetter 340 RIP 2.0.



STEP 2 Select a mode name

Select either Kimosetter 340 or Kimosetter 340i and click Next.



STEP 3 Choose port

Choose 'USB port' in the Port field and a list of printers connected to your Mac will be displayed. Select the printer to use and click OK.



CAUTION You are recommended to use the default name.

STEP 4 Confirm RIP starts up

The Print Monitor appears.



STEP 5 Test print

It is recommended to check if the printer will print a test page correctly.

5-1 Set an ink cartridge

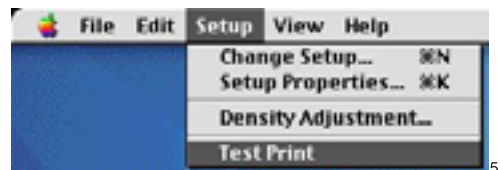
Set an appropriate ink cartridge as instructed in the User's Guide.

5-2 Load the media

Set Kimoplate e2 in the feeder of Kimosetter 340 (or Kimolec TH for Kimosetter 340i) as instructed in the User's Guide. The media size required for this test page is 210 x 297mm or larger.

5-3 Perform test print

Choose Test Print from Setup menu, and the Kimosetter will start printing a test page. check your printout.



5. Installation of KMS340 Classic Updater

Once the test print has been performed correctly, you can proceed to installation of KMS340 Classic Updater.

STEP1 Decode the downloaded file

Double click the icon of KMS340RIPClassicUpdater.sea.hqx and the compressed file will be decoded.

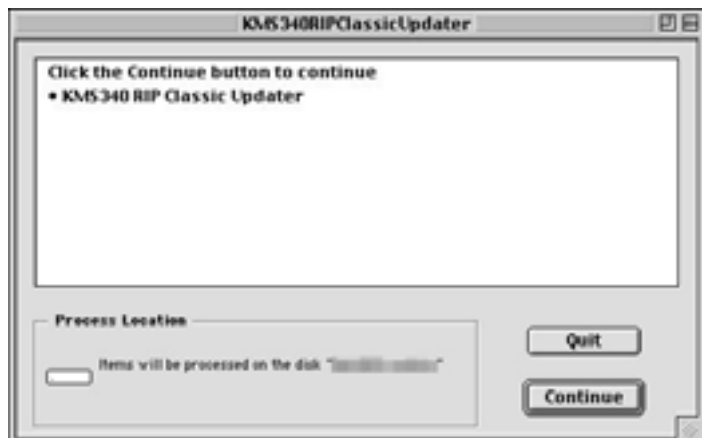


STEP2 Start Updater

Double-click the icon of KMS340RIPClassicUpdater.

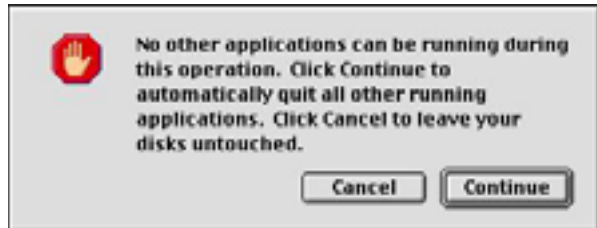


Click Continue.



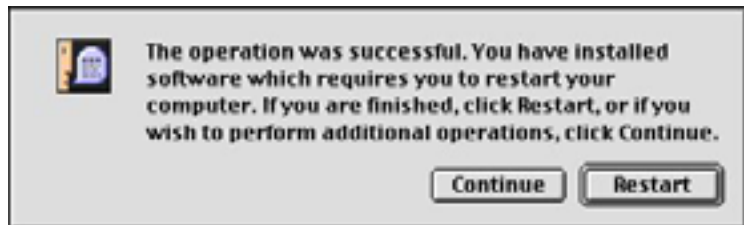
STEP3 Alert for quitting applications currently running

An alert message appears. Click Continue if you do not have files to save. If you are running an application and have files to save, click Cancel, save the files accordingly and start Updater again.



STEP4 Finish Updater

A message will appear telling the installation was successful. Click Restart.



6. Installation of Classic PPD Installer

Classic PPD Installer installs the PPD files to Mac OS X System

STEP 1 Decode the downloaded file

Double click the icon of Classic PPD Installer.sea.hqx and the compressed file will be decoded.



STEP2 Start Classic PPD Installer

Double-click the icon of Classic PPD Installer.



STEP3 Enter password in Authenticate dialog box

The root password is required. Click OK.



STEP 4 Installation starts

Classic PPD Installer dialog appears. Click Install.



An alert message appears. If the install location shown is not the disk or partition where OS X system is installed, click Switch Disk to choose a correct Install Location.



STEP 5 Finish Classic PPD Installer

A message will appear telling the installation was successful. Click Restart.



7. Selecting Kimosetter for Classic environment and for OS X

To print from Classic applications

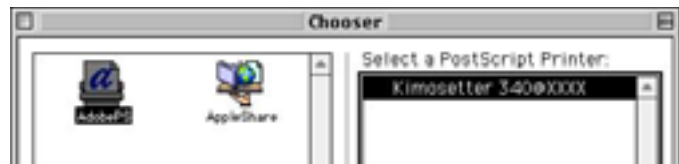
STEP1 OpenChooser

Open Chooser from Apple menu > Chooser

STEP2 Select a printer

Click AdobePS icon. Select Kimosetter 340@XXXX in the list of 'PostScript Printer'. (If you are using Kimosetter 340i, select Kimosetter 340i@XXXX)

Then click Create.



STEP3 Select the PPD file

A dialog box will appear to select a PPD file. Select 'AmKMT340A.PPD'. The PPD file is located in System folder > Extensions > Printer Descriptions. Click Select.

(For Kimosetter 340i select AmKMT340Ai.PPD)



STEP4 Quit Chooser

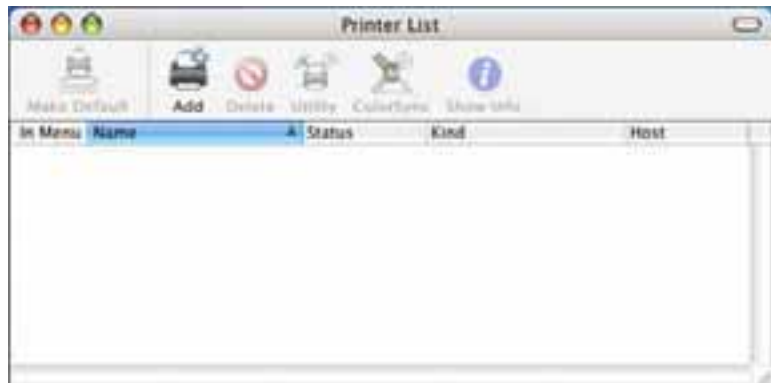
To print from OS X applications

STEP1 Open Printer Setup Utility

Location is Application > Utilites > Printer Setup Utility

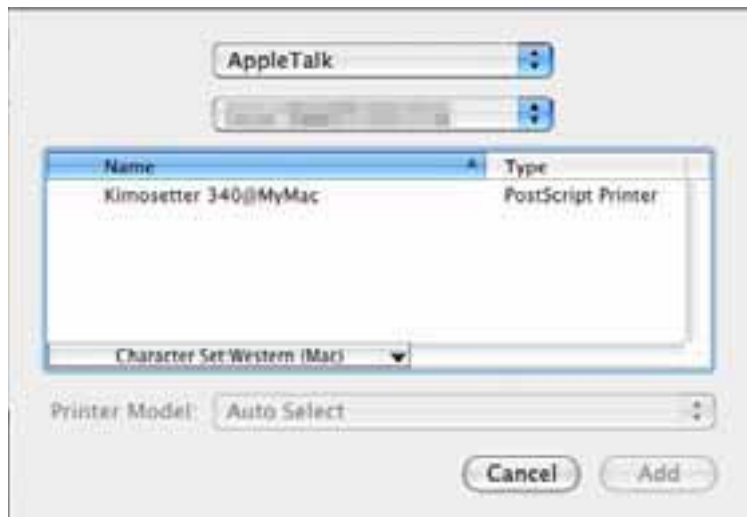


In the Printer List window click Add icon.



STEP 2 Select printer

Select AppleTalk in the upper field. Kimosetter 340@XXXX will be displayed in the list.



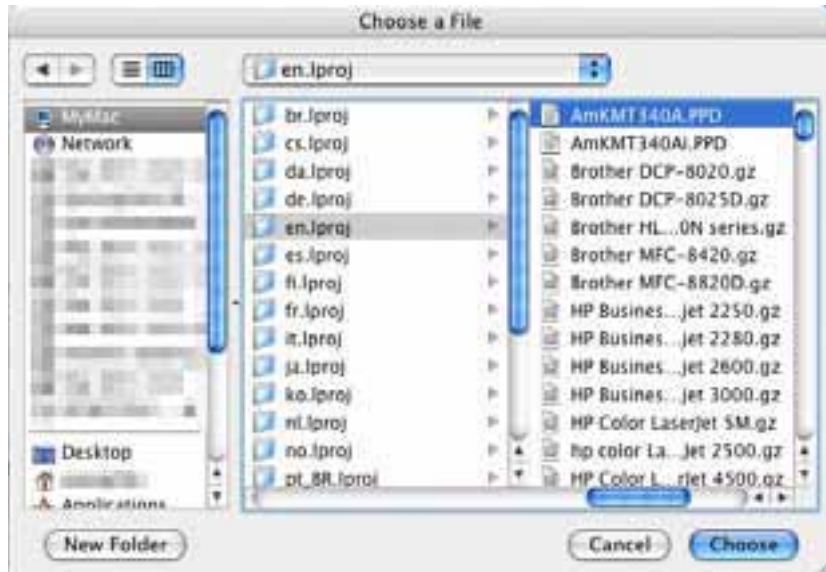
STEP 3 Select Printer Model

Select Kimosetter 340@XXXX. Select Other in the field of Printer Model.



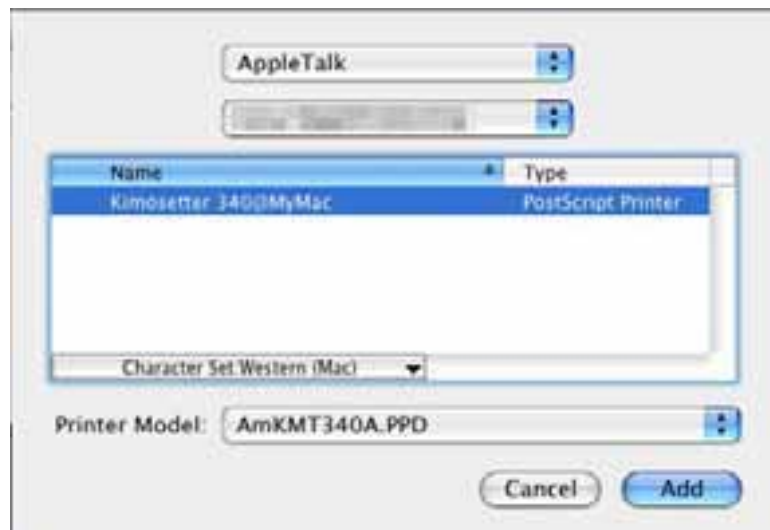
STEP 4 Select the PPD file

'Choose a File' dialog box appears. The file to select is AmKMT340A.PPD. It is located at HD > Library > Printers > PPDs > Contents > Resources > en.lproj. Click Choose.



STEP 5 Click Add

AmKMT340.PPD appears in the Printer Model field. Click Add.



STEP 6 Quit Printer Setup Utility

Once you have added Kimosetter 340 to Printer List, Kimosetter can be selectable from any OS X applications.



8. Printing

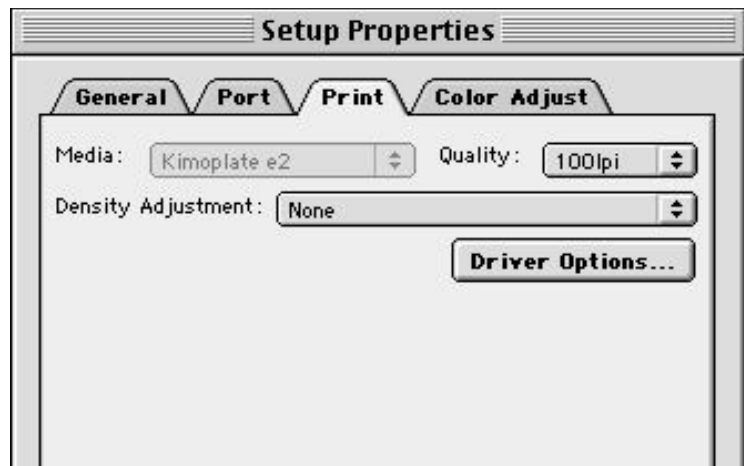
To print from Classic applications, please refer the kimosetter 340 RIP 2.0 User's Guide.

To print from OS X applications, follow the steps below.

STEP 1 Create or open a file on an OS X application

STEP 2 Setup of RIP

Activate Classic before starting up the RIP. From Setup menu open Properties. For the description on each tab, refer the Kimosetter 340 RIP 2.0 User's Guide. When finished, click OK.



CAUTION Finish Setup Properties before you add jobs.

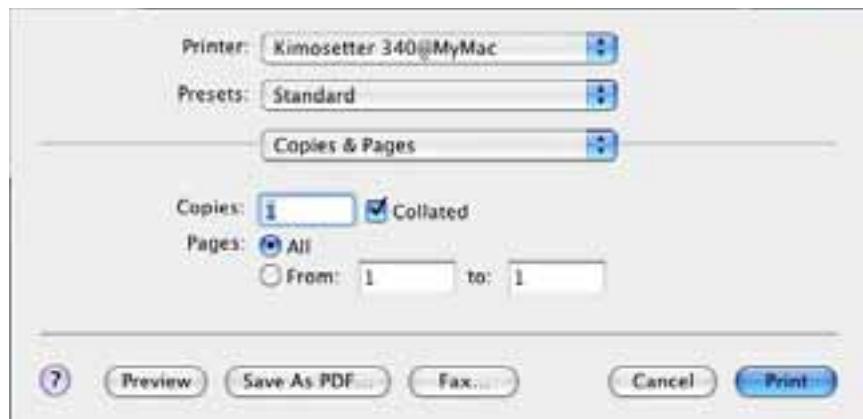
STEP 3 Select Page Setup in the OS X application

In the OS X application select Menu > Page Setup. Select a right size for Paper Size. Click OK.



STEP 4 Select File > Print in the application

Print dialog box will appear.



MEMO Printer Features in the pop up menu allows you the following optional features.



After Spooling

Select whether you Print or Hold jobs after spooling

Hold: RIP processing will not commence

Print: RIP processing starts automatically and after RIPing printing will be carried out.

After Printing

Select whether you Hold or Delete the jobs after printing

Negative Print

To invert the image, check this check box.

Mirrored Image Print

To flip the image, check this check box.

STEP 6 Click Print

Click Print to start printing.



4/38 Dacre Street
Mitchell ACT 2911
Australia

Ph +61 2 6242 4427
Fax +61 2 6242 5986
www.grafikalinks.com.au