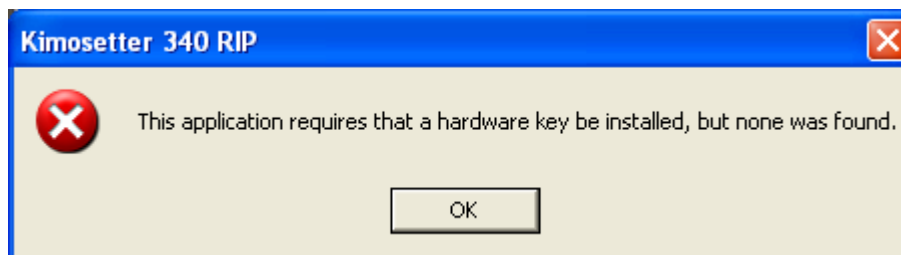


# KIMOTO

## Instructions for installing the Hardware Key Upgrade Driver...

---

If you receive the following error message it is possible that the most up-to-date driver for your hardware is not installed.



Please click on the following link:

<http://www.aladdin.com/support/hasp/hasp4/enduser.aspx>

On the "HASP4 End Users' Downloads" page click on the file link [HASP4\\_driver\\_setup.zip](#) and save it to your desktop.

After downloading this file unzip the folder "HASP4\_driver\_setup" and click the "hdd32.exe" file to load the new hardware key upgrade.



4/38 Dacre Street  
Mitchell ACT 2911  
Australia

Ph +61 2 6242 4427  
Fax +61 2 6242 5986  
[www.grafikalinks.com.au](http://www.grafikalinks.com.au)

April 2009