



Kimosetter RIP

Quick Start

Sep. 2009

The software described in this guide is furnished under a license agreement and may be used only in accordance with the terms of the agreement.

Copyright Notice

Copyright © 2000-2008 Beijing Founder Electronics Co., Ltd. All Rights Reserved.

Any technical documentation that is made available by the Beijing Founder Electronics Co., Ltd. is the copyrighted work of the Beijing Founder Electronics Co., Ltd. and is owned by the Beijing Founder Electronics Co., Ltd.

NO WARRANTY. The technical documentation is being delivered to you AS-IS and the Beijing Founder Electronics Co., Ltd. makes no warranty as to its accuracy or use. Any use of the technical documentation or the information contained therein is at the risk of the user. Documentation may include technical or other inaccuracies or typographical errors. Founder reserves the right to make changes without prior notice. No part of this publication may be copied without the express written permission of the Beijing Founder Electronics Co., Ltd.

Trademarks

Founder and Founder logo are registered trademarks of Founder Group Corporation. Kimosetter RIP is a trademark of the Kimoto Co., Ltd.

KIMOTO is a registered trademark of Kimoto Co., Ltd.

Other product, font and company names and logos in this guide are trademarks or registered trademarks of their respective holders and are hereby acknowledged.

Beijing Founder Electronics Co., Ltd.

Address: No.9, Str. 5, Shangdi, Haidian District, Beijing, 100085 P. R. China

Tel: +86 (10) 6298 1440, Fax: +86 (10) 6298 1438

Technical support via email:

E-mail: gasupport@founder.com

Visit our web site: <http://www.founder.com.cn>



Contents

Preface	1
Quick Start	3
1.1 General Configuration	3
1.2 Create a Template	5
1.3 Submit a Job to Kimosetter RIP	9
1.4 RIP and Preview the Job	11
1.5 Final Output.....	12

Preface

This documentation will provide you with a brief introduction to Kimosetter RIP, and enable you to learn the basic functions of this application. Following a brief description of the configuration of Kimosetter RIP, a simple example job will be used to illustrate how jobs are output with this application.

This quick start is intended as a supplement to the *Kimosetter RIP User Guide* manual with an easy-to-learn approach about working with this application. You will find details about the various elements in the Kimosetter RIP user interface in the online help.

We presume that you are familiar with the basic functions of the operating systems where Kimosetter RIP runs.


In complex installations, you may wish to send jobs between PCs and Macintosh computers. This manual describes the details special to Kimosetter RIP, but not the fundamentals of networking connections and services. You are likely to require assistance from technical support staff for initial configuration and occasional maintenance of such installations.

1

Quick Start

In this chapter, you will learn how to create a parameter template, and how to submit, RIP, preview, and output simple jobs. More details are covered in the separate *Kimosetter RIP User Guide*.

1.1 General Configuration

Once the Kimosetter RIP is installed on your computer, a shortcut  will be placed on your desktop. You may launch Kimosetter RIP by double-clicking this icon or by selecting the Kimosetter RIP entry in the Program menu. Once Kimosetter RIP is launched, you will see the user interface as shown in *Figure1-1*.

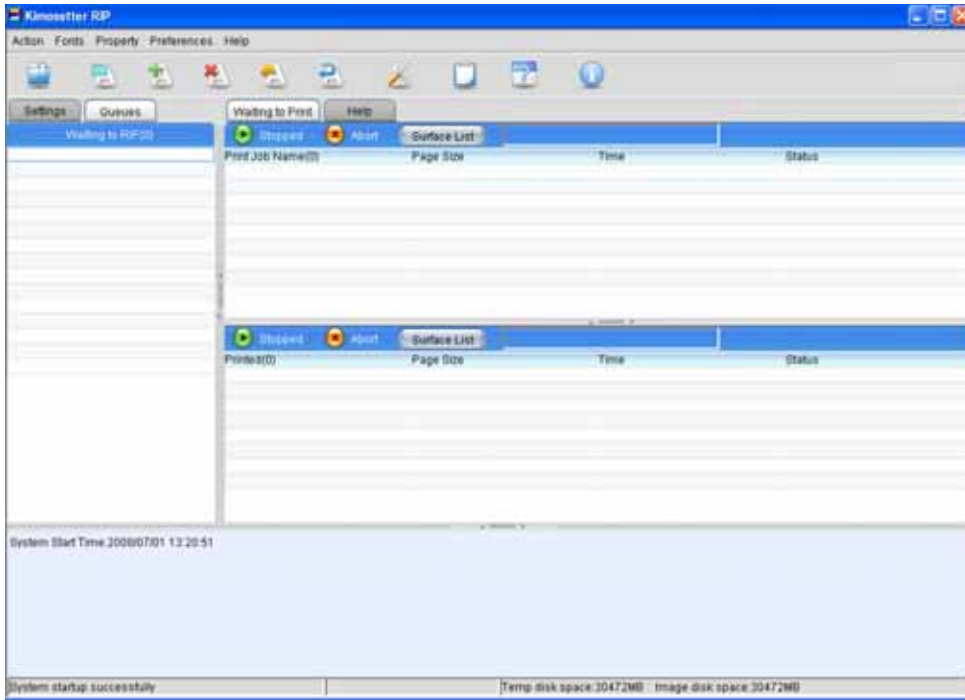


Figure1-1.

1. The first step is to install and reset fonts so that the Kimosetter RIP can interpret fonts and output them correctly. Here we assume that the font library has been installed. Select **Reset Fonts** in **Fonts** menu to open the **Reset Fonts** dialog box as shown in Figure1-2.



Figure1-2.

2. Click **OK** to reset the PS fonts installed in the specified font path. You can integrate the TrueType fonts installed in your operating

system into Kimosetter RIP by checking the **Enable TrueType Fonts** box and clicking **OK**.

3. After resetting fonts, you will need to configure the system preferences. Select **System Preferences** in **Preferences** menu to open the window as shown in *Figure1-3*.



Figure1-3.

4. Configure your preferred system settings for running Kimosetter RIP. For more details, please refer to the separate *Kimosetter RIP User Guide*.

1.2 Create a Template

1. Once the system preferences are configured, you will need to create a convenient *template* - a collection of settings that Kimosetter RIP uses to process and output the jobs submitted to it. Click the **Settings** tab in the left column of the user interface, and click the **Template Manager** icon. The **Template Manager** panel is displayed.

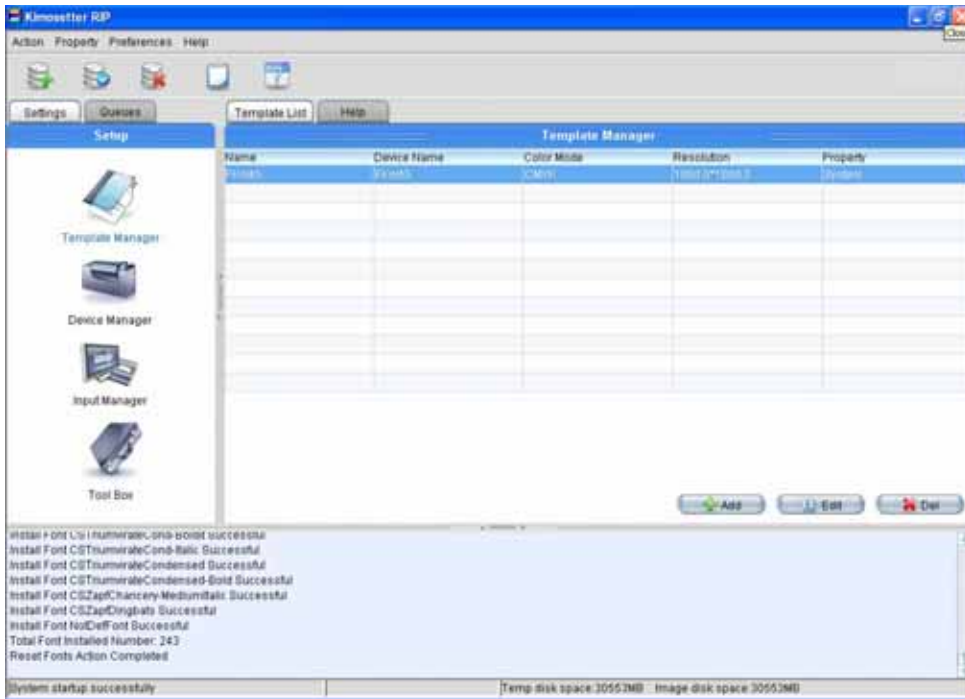


Figure1-4.

2. The **Template Manager** provides a default template. Select it and click the **Add** button to open the dialog box as shown in *Figure1-5*.

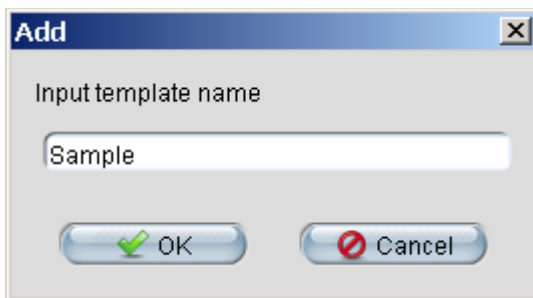


Figure1-5.

3. Input the name of the new template and click **OK** to get the template **Edit** dialog box.



Figure1-6.

4. Clicking the **RIP Setup** button opens the **RIP Setup** dialog box (shown in Figure1-7), where you are able to configure the RIP related parameters, such as screen, color management, and etc.

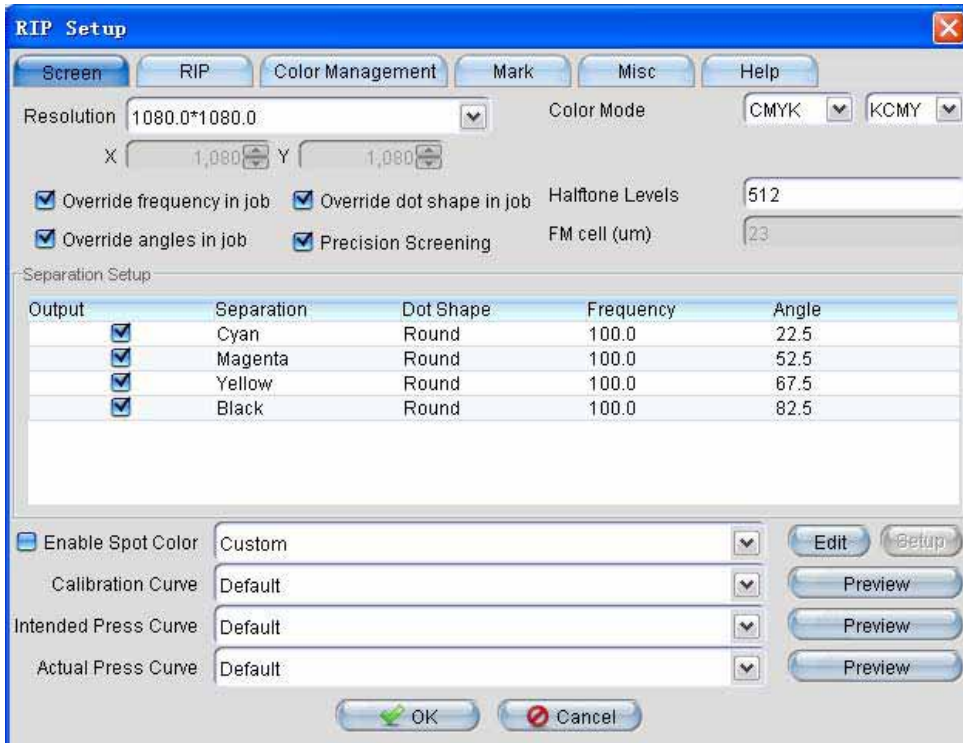


Figure1-7.

5. Here as an example, you can set all parameters in the **RIP Setup** dialog box to default values. For more information about the options in this dialog box, see descriptions in *Kimsetter RIP User Guide*.
6. Clicking the **Device Setup** button in **Edit** dialog box opens the **Device Setup** dialog box (shown in *Figure1-8*), where you can set the device parameters.

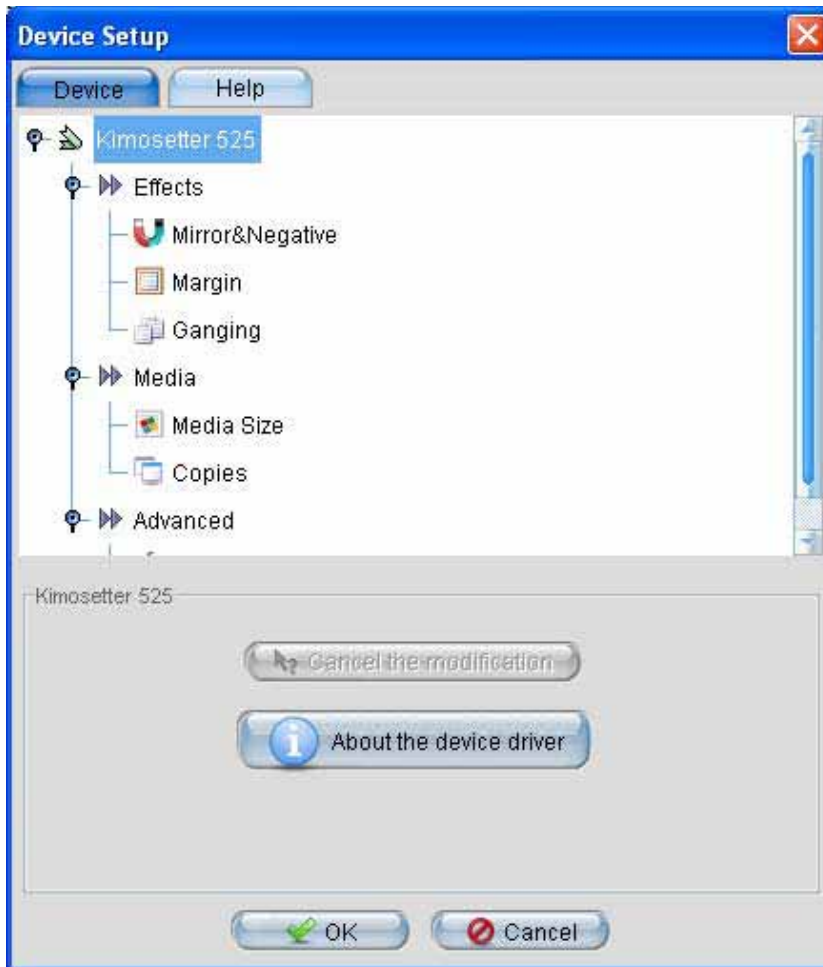


Figure1-8.

7. Here as an example, you can set all parameters to default values as well.

8. After setting the RIP and device parameters, you may optionally set a password for the template. Click the **Password** button in **Edit** dialog box to open the **Setup Password** dialog box as shown in *Figure1-9*. Input the new and confirm passwords and click **OK**. The template will be password-protected.

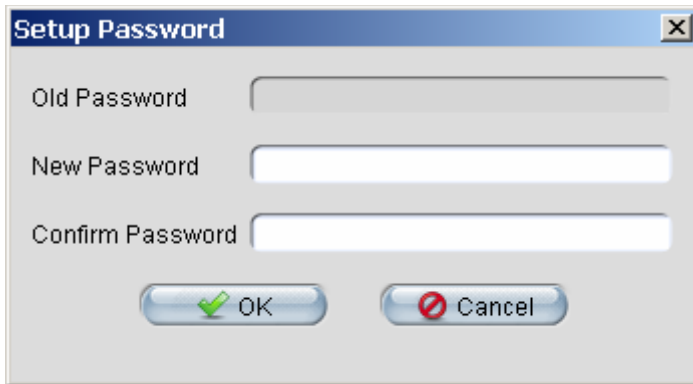


Figure1-9.

9. In the **Edit** dialog box, click **OK** to save the changes and close the dialog box. A new entry of template appears in the template list.

1.3 Submit a Job to Kimosetter RIP

You have seen how to create a template in Kimosetter RIP. Now it's time to see how to submit a simple job to it.

If you want to submit a file to Kimosetter RIP for printing, you can do so directly by choosing **Open File** from the **Action** menu in **Queues** view and specifying that file in the displayed **Open** dialog box (shown in *Figure1-10*).

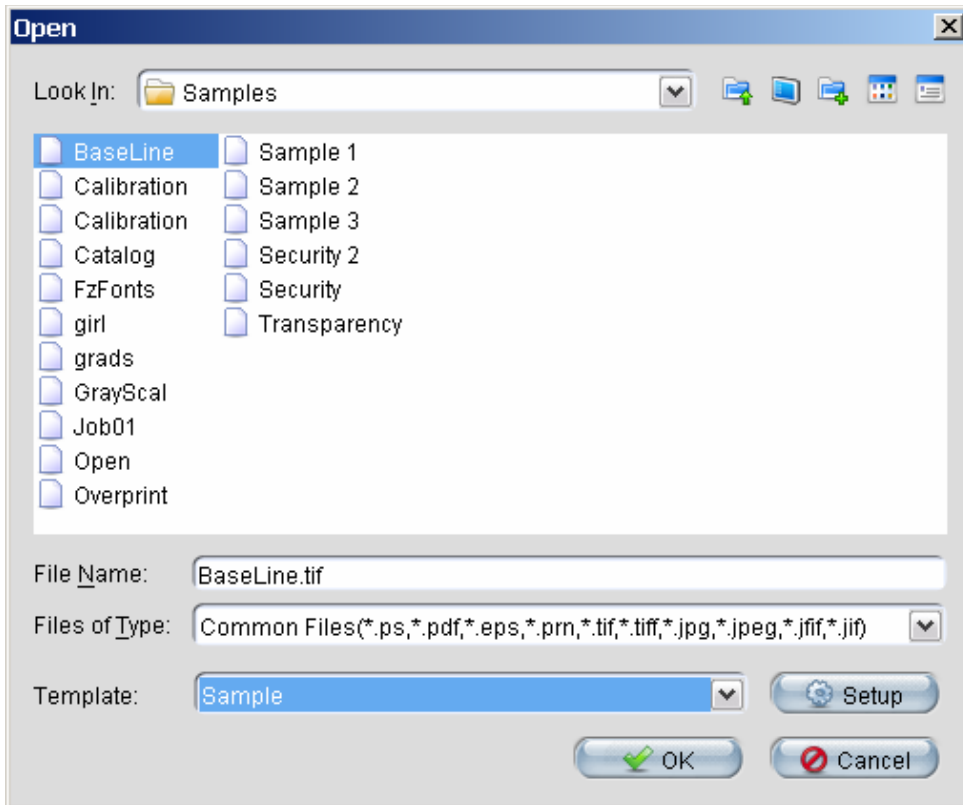





Figure1-10.



Select the file type in the **Files of Type** list. Then, select the file that you want to submit. Here we take the file "BaseLine.tif" as an example. And then, select a template from the **Template** dropdown list. The **Setup** button enables you to modify the template parameters.

Click **OK** to send the file to the **Waiting to RIP** queue.

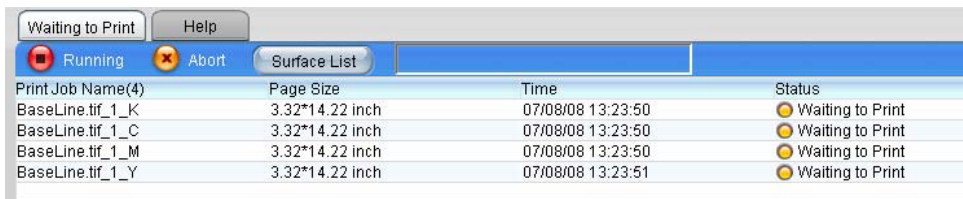
Note: Before submitting a job to Kimosetter RIP, make sure that the queues are held, i.e. keep the  Stopped icon in green. Holding jobs in different queues allows you to do some necessary tasks, such as configuring RIP and output settings and previewing jobs. Clicking the  Stopped icon will switch it to  Running, and release the jobs in the corresponding queue.

Usually, however, you will want to let the Kimosetter RIP accept input directly from other applications. We can do this using AppleTalk, and publish a printer visible to Macintosh computers on your network. For more details on supplying jobs to the RIP, see the chapter "Configuring Input" in *Kimosetter RIP User Guide*.

1.4 RIP and Preview the Job

The submitted job is held in **Waiting to RIP** queue. Before releasing it to be processed by RIP, you can view the job information, or modify the RIP settings. Once all necessary tasks for a held job have been completed, you can release the job to the next stage by switching the  **Stopped** icon to  **Running** on the top of the **Waiting to Print** queue. The released will be processed by RIP. During processing, the status bar on the top of the queue shows what is happening. For example, a progress bar shows how much of the job the RIP has read and disappears when the RIP has processed the complete job.

When the processing finishes, the separated, screened pages intended for final output are displayed in the **Waiting to Print** queue. See *Figure1-11*.






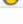
Print Job Name(4)	Page Size	Time	Status
BaseLine.tif_1_K	3.32*14.22 inch	07/08/08 13:23:50	 Waiting to Print
BaseLine.tif_1_C	3.32*14.22 inch	07/08/08 13:23:50	 Waiting to Print
BaseLine.tif_1_M	3.32*14.22 inch	07/08/08 13:23:50	 Waiting to Print
BaseLine.tif_1_Y	3.32*14.22 inch	07/08/08 13:23:51	 Waiting to Print

Figure1-11.

Before releasing the pages to the next stage, it is a good idea to view them on screen so that you avoid wasting materials.

To launch the **Preview Client**, select the page(s) in the **Waiting to Print** queue, right-click and select **Page Preview**. The **Preview Client** will typically be similar to this:

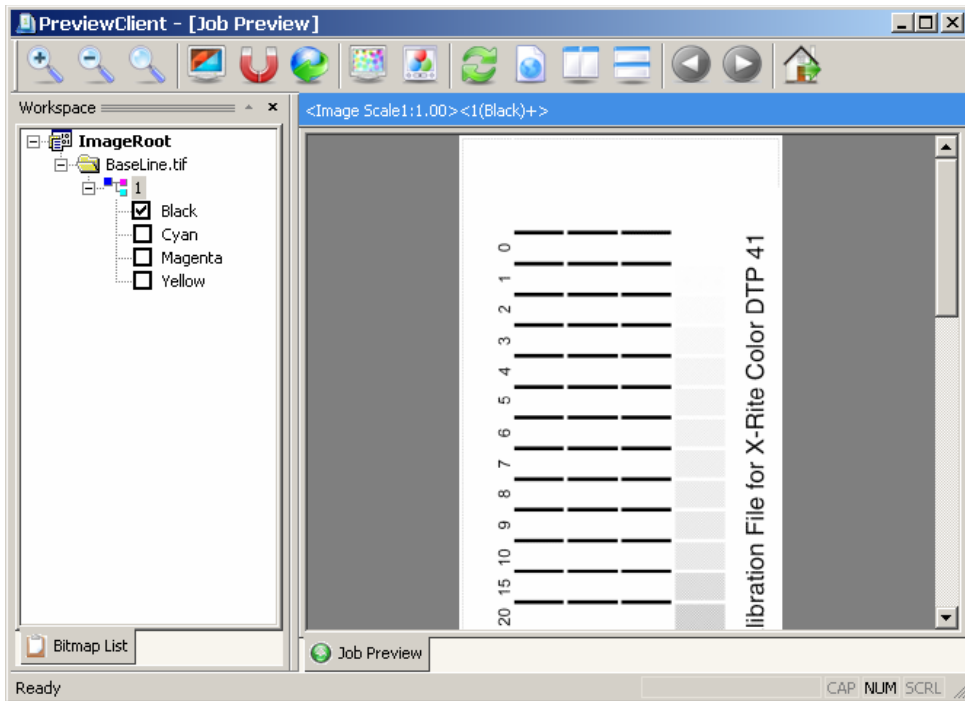




Figure1-12.

The left panel of the **Preview Client** shows a fully expended job tree, which contains items of job name, page number and separations. It is possible to control which separations are viewed in order to view effects such as knockouts.

1.5 Final Output

When you have finished inspecting the page preview, and the preview has been approved, you can return to the queues view, and output the separations to your plate or film device by switching the  **Stopped** icon to  **Running** on the top of the **Printed** queue. When the job is being output, the spreading dark gray bar on the top of the **Printed** queue represents the amount of data that has been sent to the output device.

The printed job will be listed in the **Printed** queue.

To delete jobs from the system, highlight them (you can select a group of jobs together using the mouse and the *Shift* or *Ctrl* key), then right-click to access the **Delete Selected Job** or **Delete All** selection. You can also delete jobs, once highlighted, by using the *Delete* key on the keyboard.



4/38 Dacre Street
Mitchell ACT 2911
Australia

Ph +61 2 6242 4427
Fax +61 2 6242 5986
www.grafikalinks.com.au