

Kimosetter 525

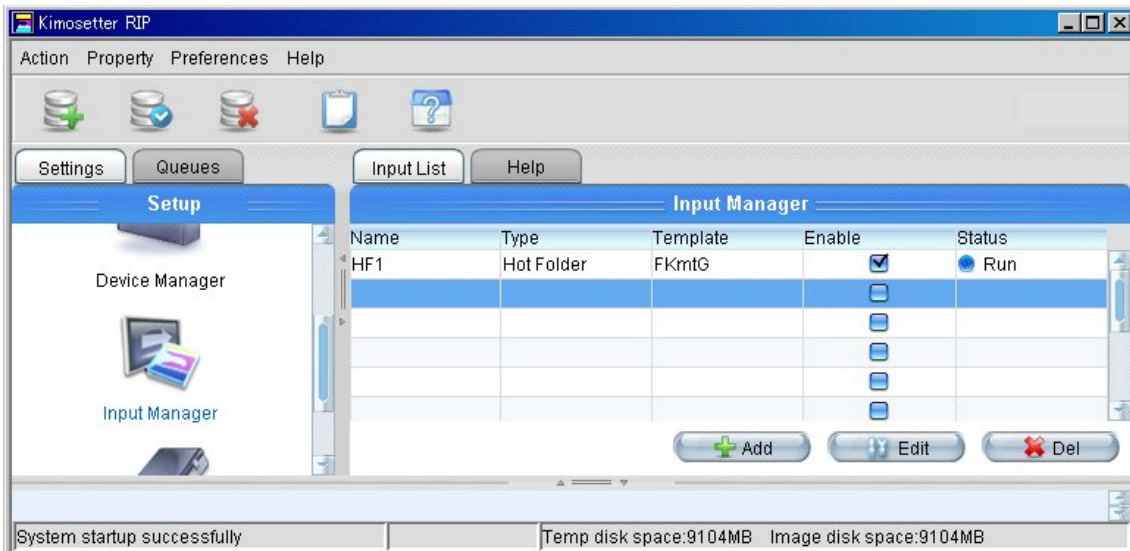
Printing via a Macintosh

Printing via a Macintosh

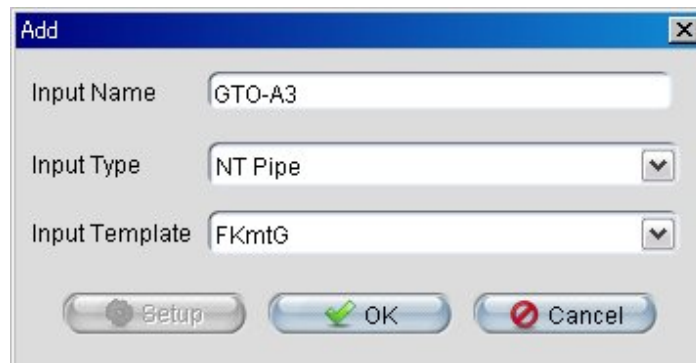
Requirement: Macintosh running Mac OSX, version 10.3.x or higher.

Step 1 Configuring NT pipe input

1.1 Click **Add** in the Input Manager. The RIP displays the **Add** dialog box.

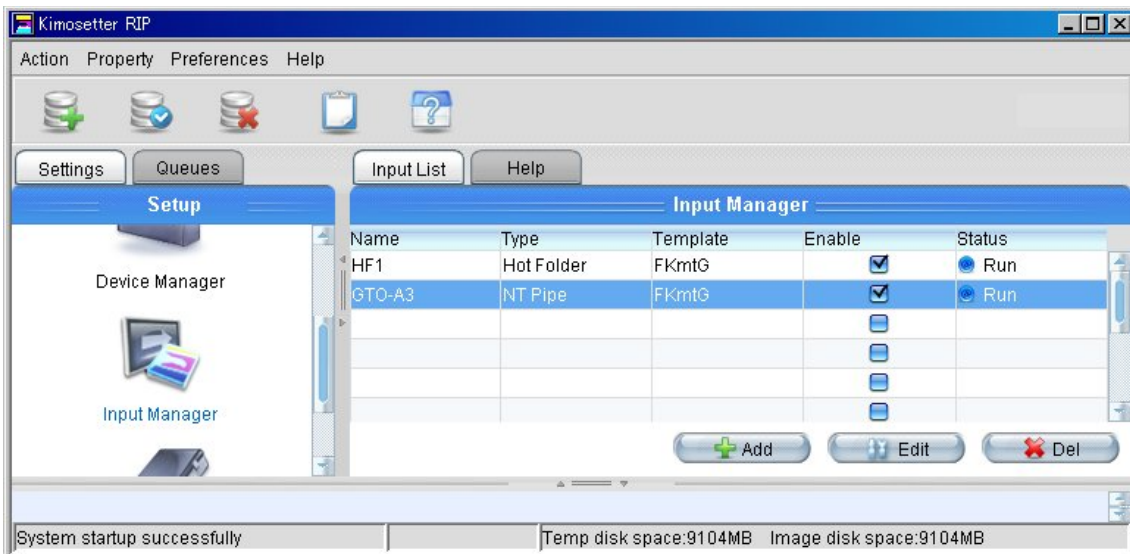


1.2 Choose **NT Pipe** from the Input Type dropdown list, and input suitable Input Name.



1.3 Select a template, and click **OK**.

1.4 Check the **Enable** box in the Input Manager to enable the input.

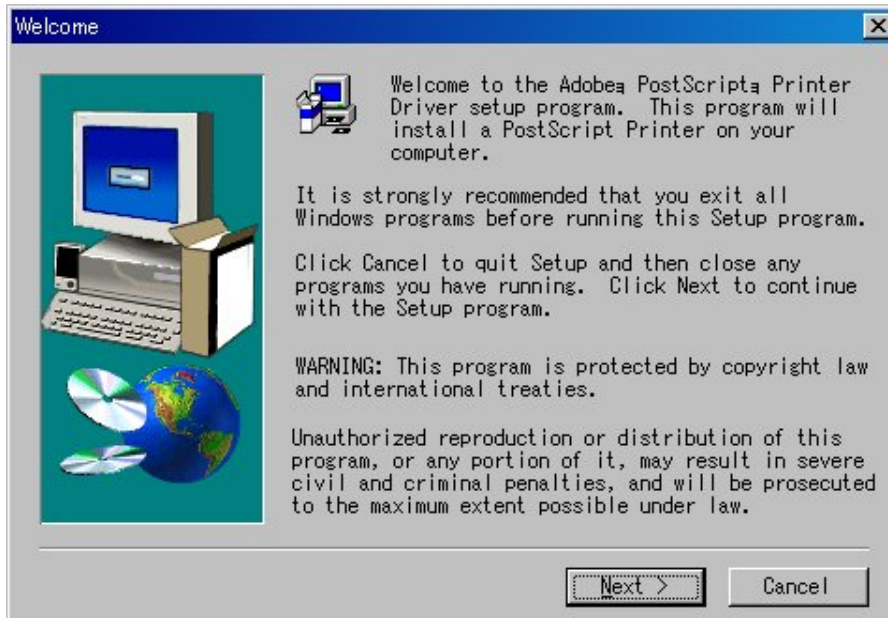


Now you have a RIP channel that will later form a port visible to the Windows printer configuration software.

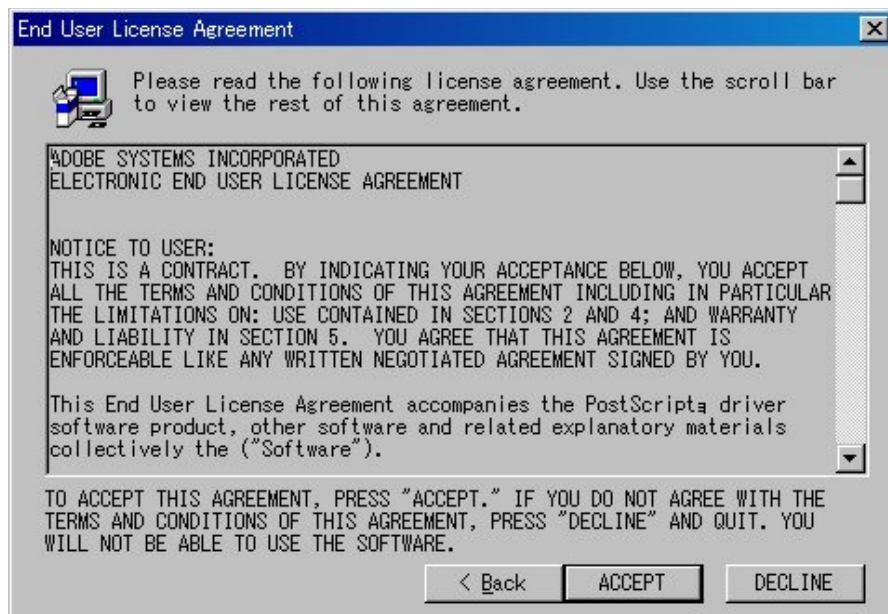
Step 2 Installing Adobe PS driver

The following instructions assume that you have downloaded the free Adobe PS driver from the Web link <http://www.mykimosetter.com>

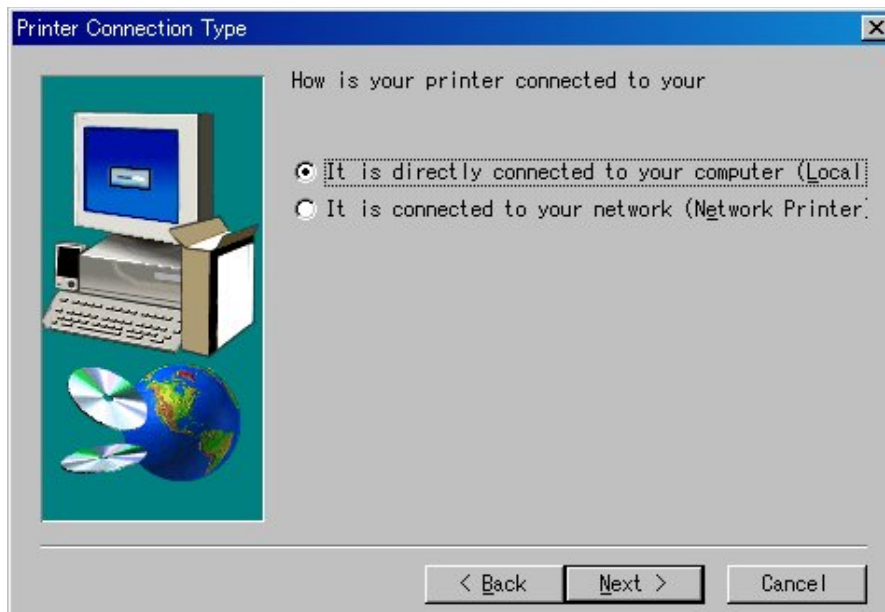
2.1 Double click on *winsteng.exe*. Welcome window appears, and click **Next**.



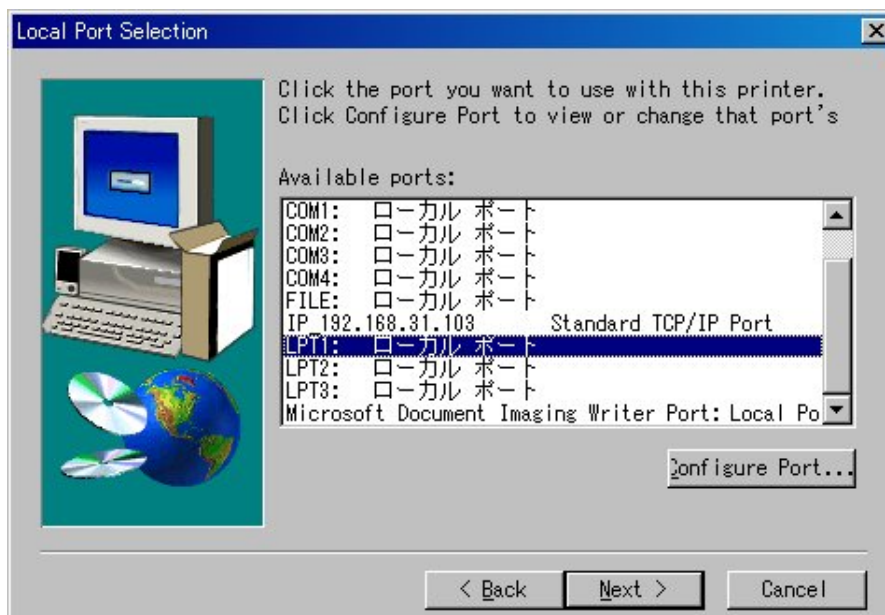
2.2 If you accept all the terms of the agreement, click **ACCEPT** to continue.



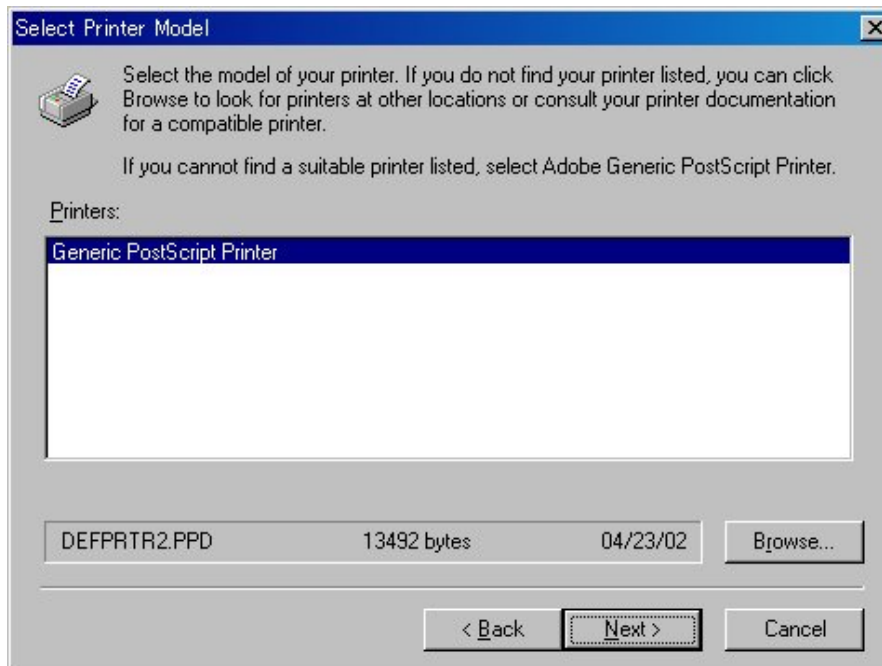
2.3 Choose Local Printer, and click **Next**.



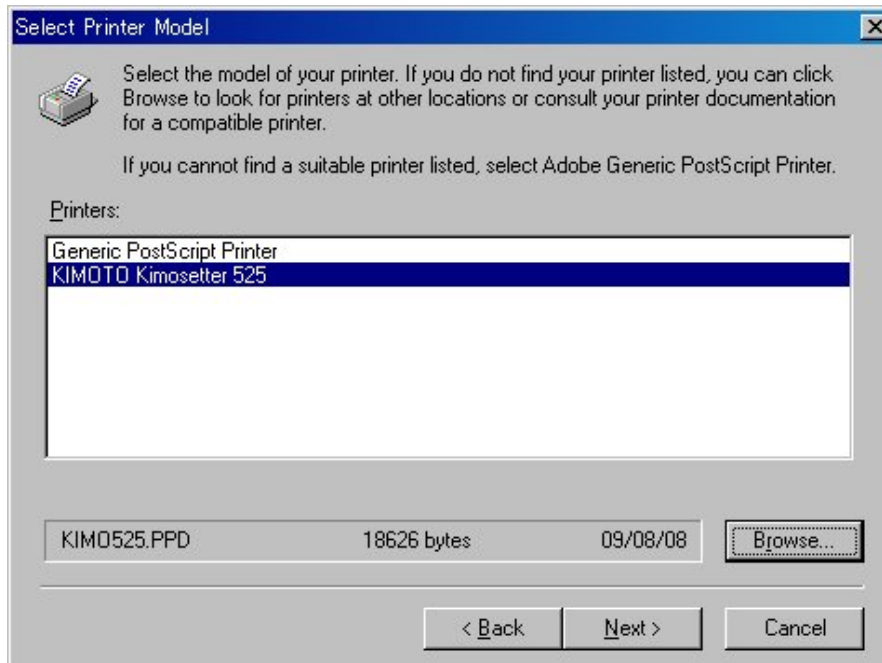
2.4 Select any port in Available ports list box, and click **Next**. The port selected in this step is temporary. After creating new local port connecting to RIP in Step 3, the port selection should be changed.



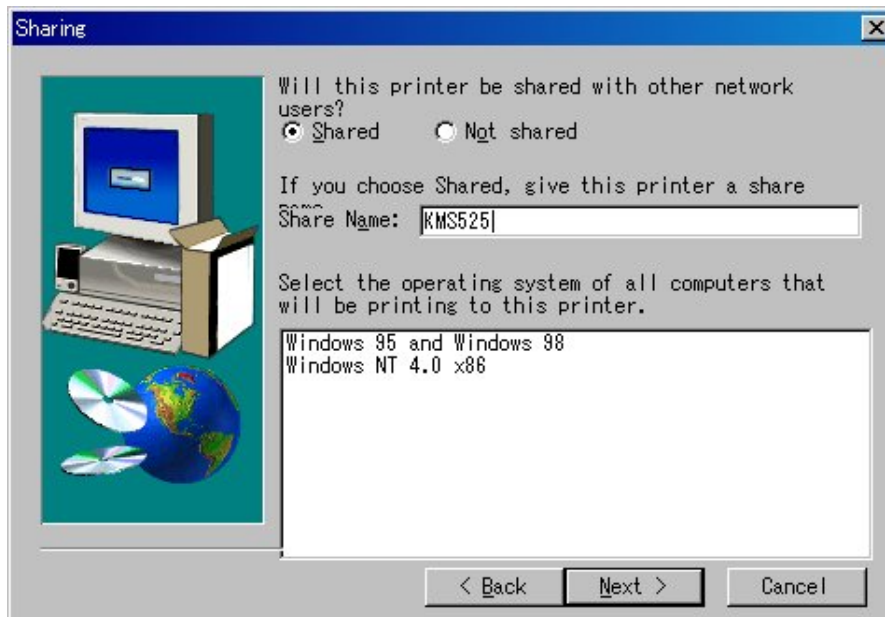
2.5 Click **Browse** button, and select *Kimo525.PPD* in the PPD folder on the Kimosetter RIP installation CD.



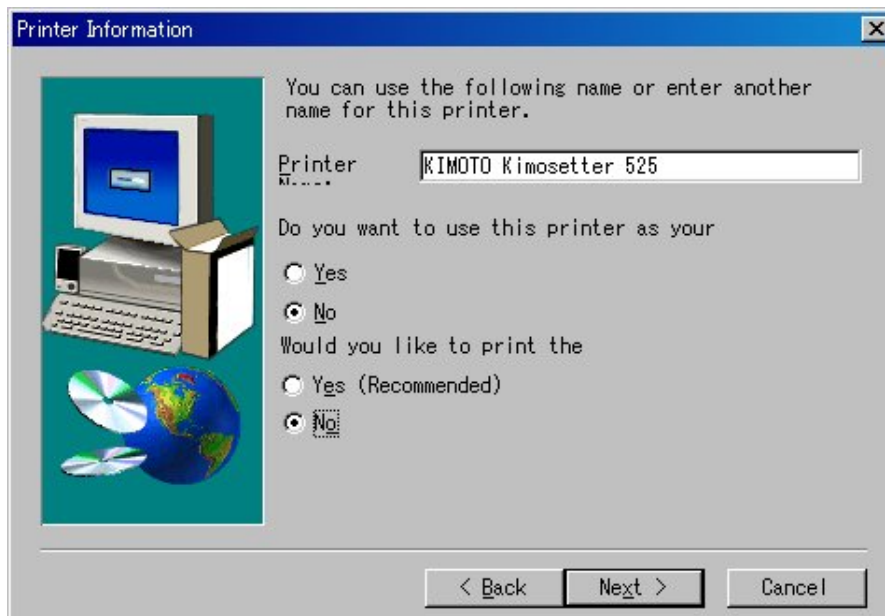
2.6 Select **KIMOTO Kimosetter525** in Printers list box, and click **Next**.



2.7 Choose **Shared**, and input shared printer name in Share name text box.
Note: Shared name must be less than 12 characters.



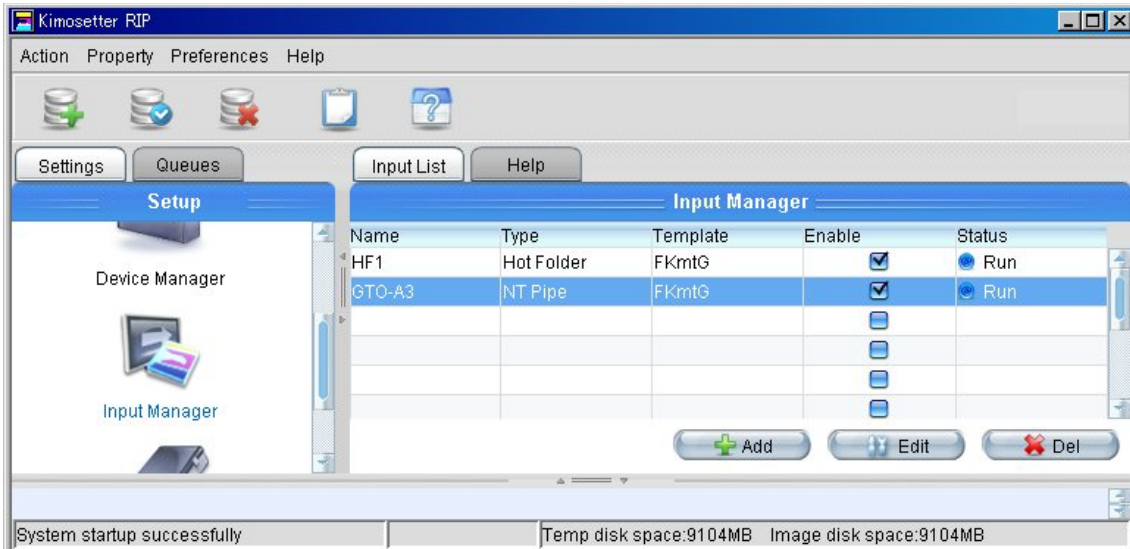
2.8 Click **Next** to continue, and proceed with installation according to instructions.



2.9 When Setup completion window appears, click **Finish** to complete the installation.

Step 3 Creating a new port connecting to RIP

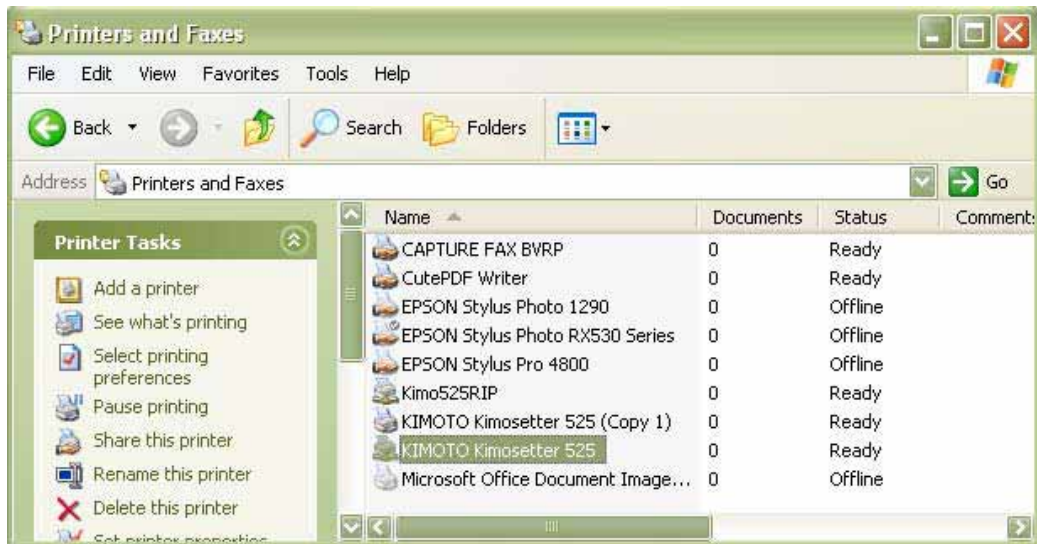
3.1 Start up the Kimosetter RIP, and confirm that NT pipe input created in step 1 has been enabled.



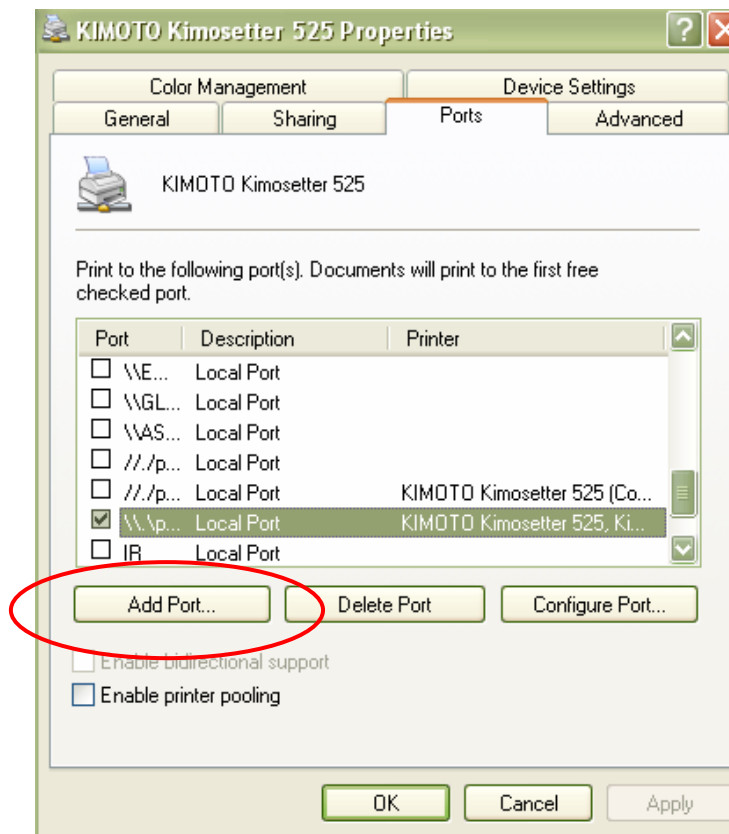
3.2 Open Control Panel, and click Printers and Faxes.



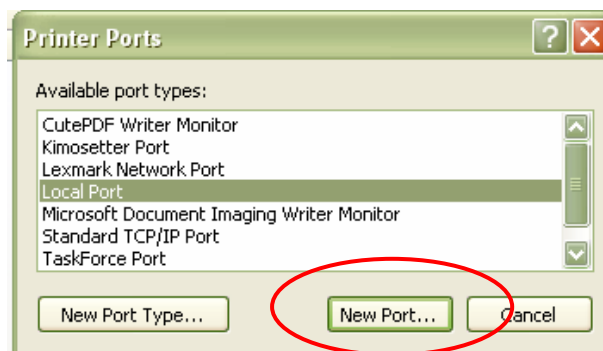
3.3 Select Kimosetter 525, and choose Properties from right-click menu on Kimosetter 525 icon.



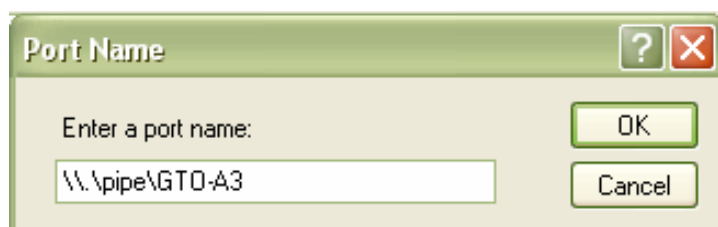
3.4 Click **Ports** tab in the Properties window, and click **Add Port** button.



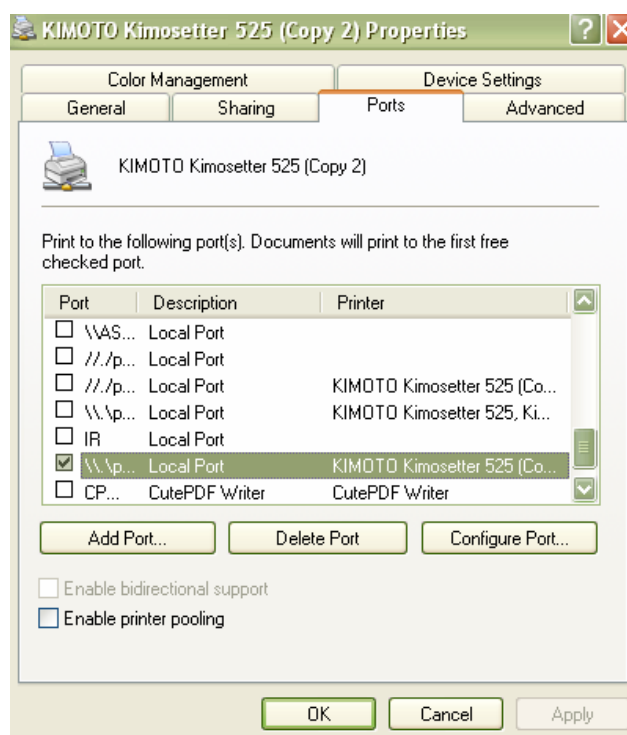
3.5 Select Local port, and click **New Port** button.



3.6 Input the port name: **\\.\pipe\GTO-A3** and click OK.



3.7 Close the Printer Ports window by clicking **Close**. Select the port: **\\.\pipe\GTO-A3** from Port list box, and click **OK**.

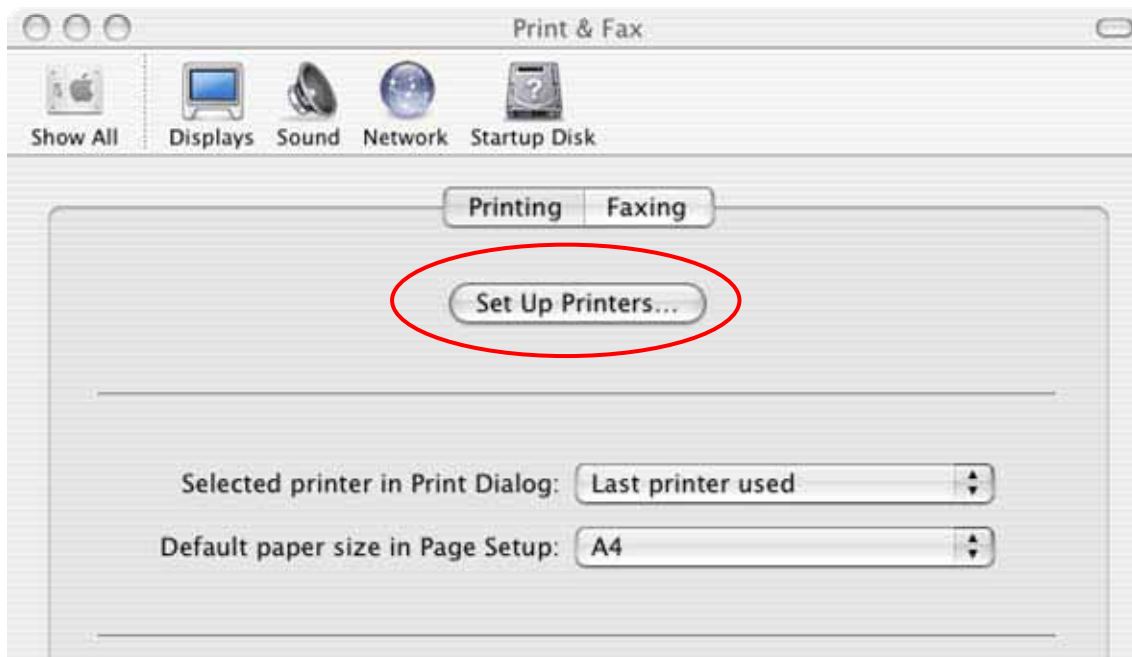


Step 4 Configuring Windows Printing on Macintosh

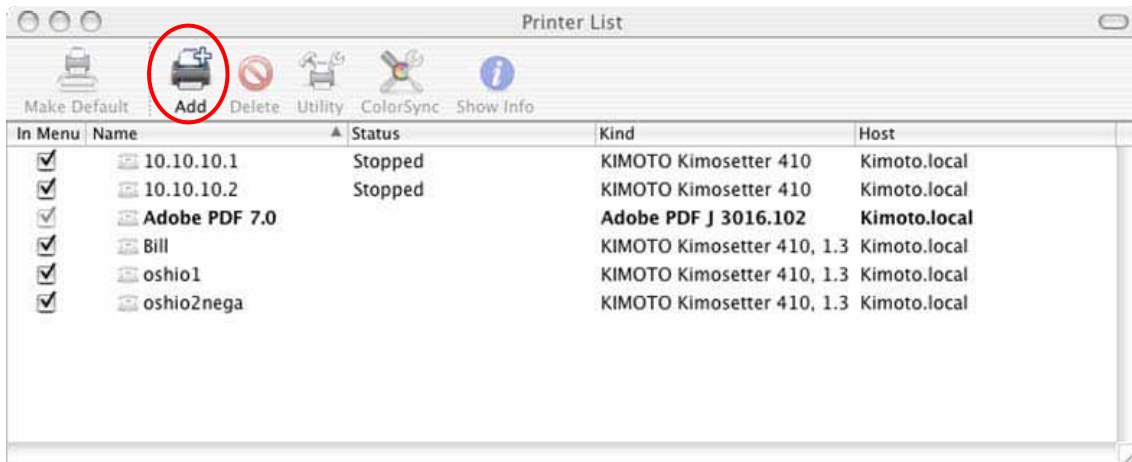
4.1 Open System Preferences and click **Print & Fax**.



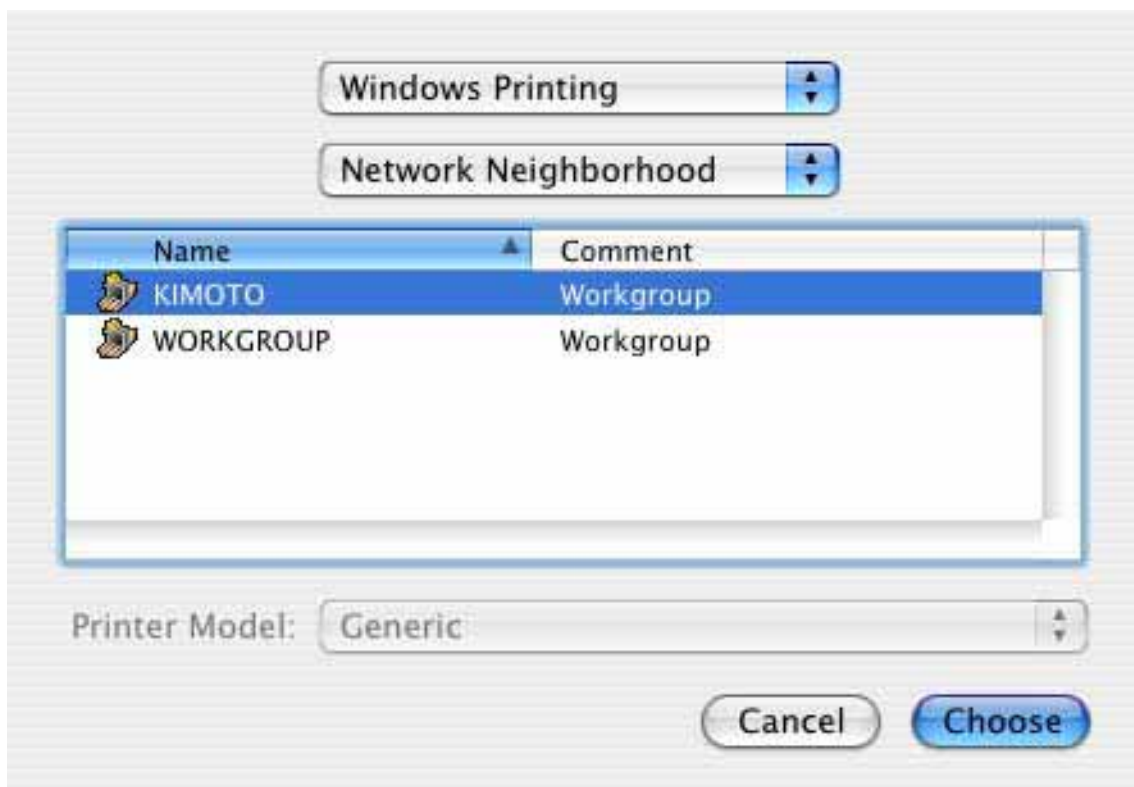
4.2 Click **Printing**, and then click the **Set Up Printers...** button.



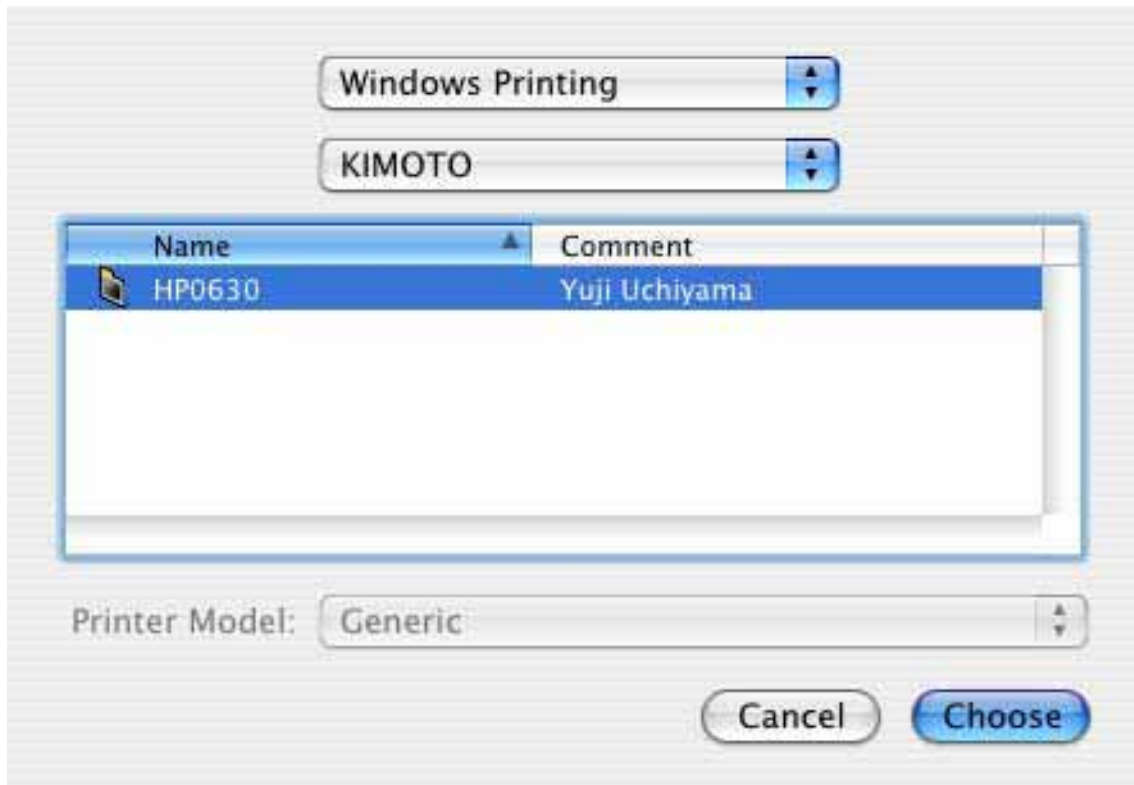
4.3 Choose Printers > **Add Printer** or click **Add** icon.



4.4 Choose **Windows Printing** from the top pop-up menu, choose a network workgroup from the pop-up menu that appears directly below it, select a workgroup from the list, and click **Choose**.



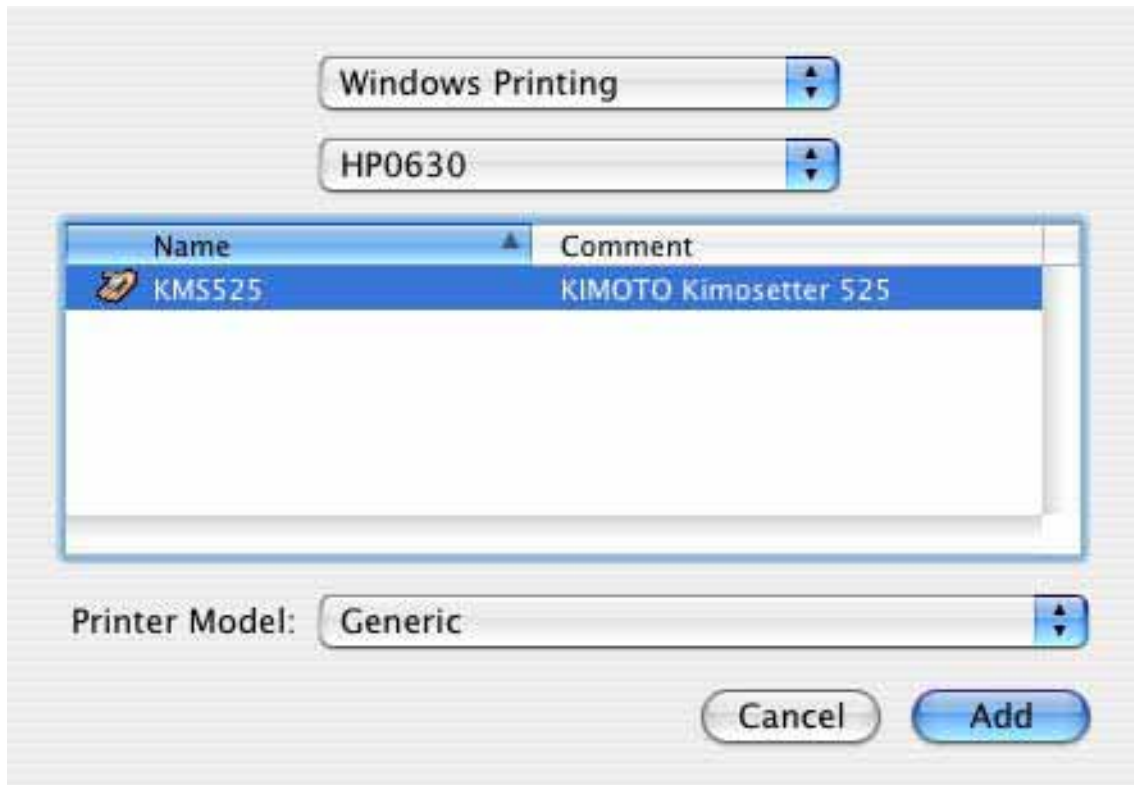
4.5 Select the PC of RIP, and click **Choose**.



Enter username and password, and click **OK**.



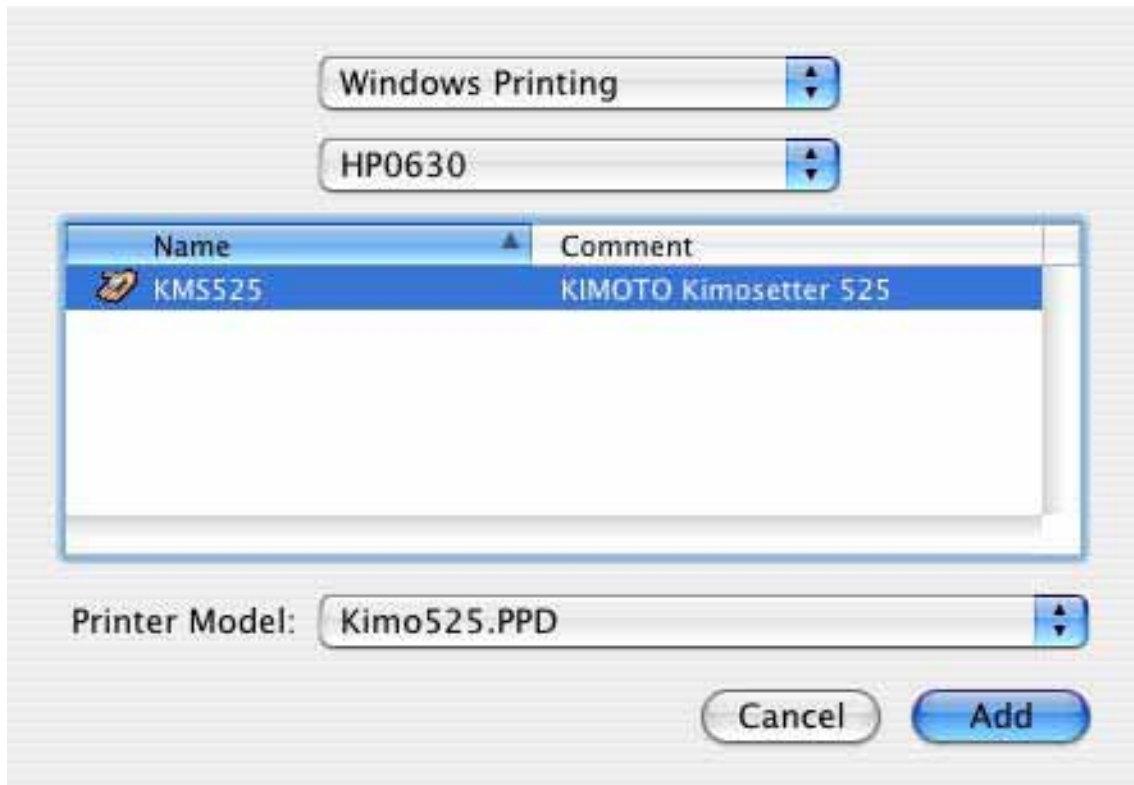
4.6 Select **KMS525** in the Printer List.



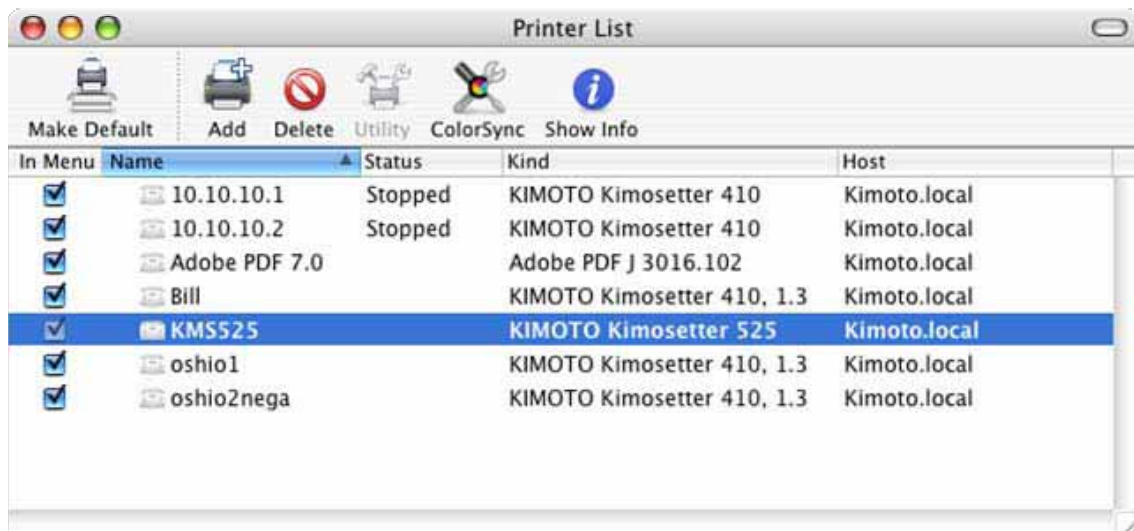
4.7 Choose **Other...** from the bottom pop up Printer Model menu, and select **Kimo525.PPD**.



4.8 Click **Add**.



The KMS525 appears in the Printer List.



4/38 Dacre Street
Mitchell ACT 2911
Australia

Ph +61 2 6242 4427
Fax +61 2 6242 5986
www.grafkalinks.com.au